

Han 16Ex-M-c

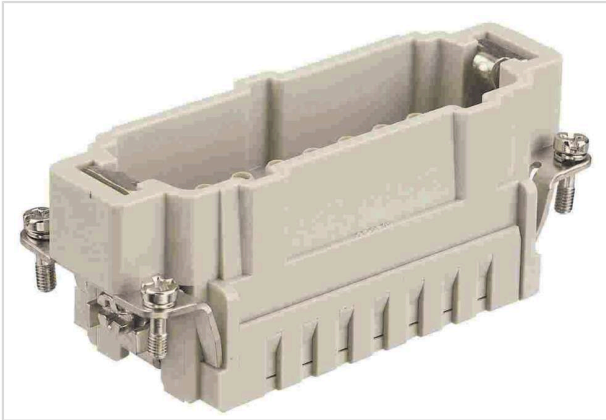


Image is for illustration purposes only. Please refer to product description.

Part number	09 36 016 2602
Specification	Han 16Ex-M-c
HARTING eCatalogue	https://b2b.harting.com/09360162602

Identification

Category	Inserts
Series	Han [®] Ex

Version

Termination method	Crimp termination
Gender	Male
Size	16 B
Number of contacts	16
PE contact	Yes
Details	Please order crimp contacts separately.
Details	ATTENTION! Only to be used with Han [®] Ex hoods and housings!

Technical characteristics

Conductor cross-section	0.14 ... 4 mm ²
Rated current	16 A
Rated voltage	90 V
Insulation resistance	>10 ¹⁰ Ω
Limiting temperature	-20 ... +40 °C
Mating cycles	≥500

Material properties

Material (insert)	Polycarbonate (PC)
Colour (insert)	RAL 7032 (pebble grey)



Pushing Performance
Since 1945

Material properties

Material flammability class acc. to UL 94	V-0
RoHS	compliant
ELV status	compliant
China RoHS	e
REACH Annex XVII substances	Not contained
REACH ANNEX XIV substances	Not contained
REACH SVHC substances	Not contained
California Proposition 65 substances	Yes
California Proposition 65 substances	Lead Nickel
Fire protection on railway vehicles	EN 45545-2 (2020-08)
Requirement set with Hazard Levels	R22 (HL 1-3) R23 (HL 1-3)

Commercial data

Packaging size	1
Net weight	60.4 g
Country of origin	Germany
European customs tariff number	85366990
GTIN	5713140054936
eCl@ss	27440205 Contact insert for industrial connectors